

AKSAK

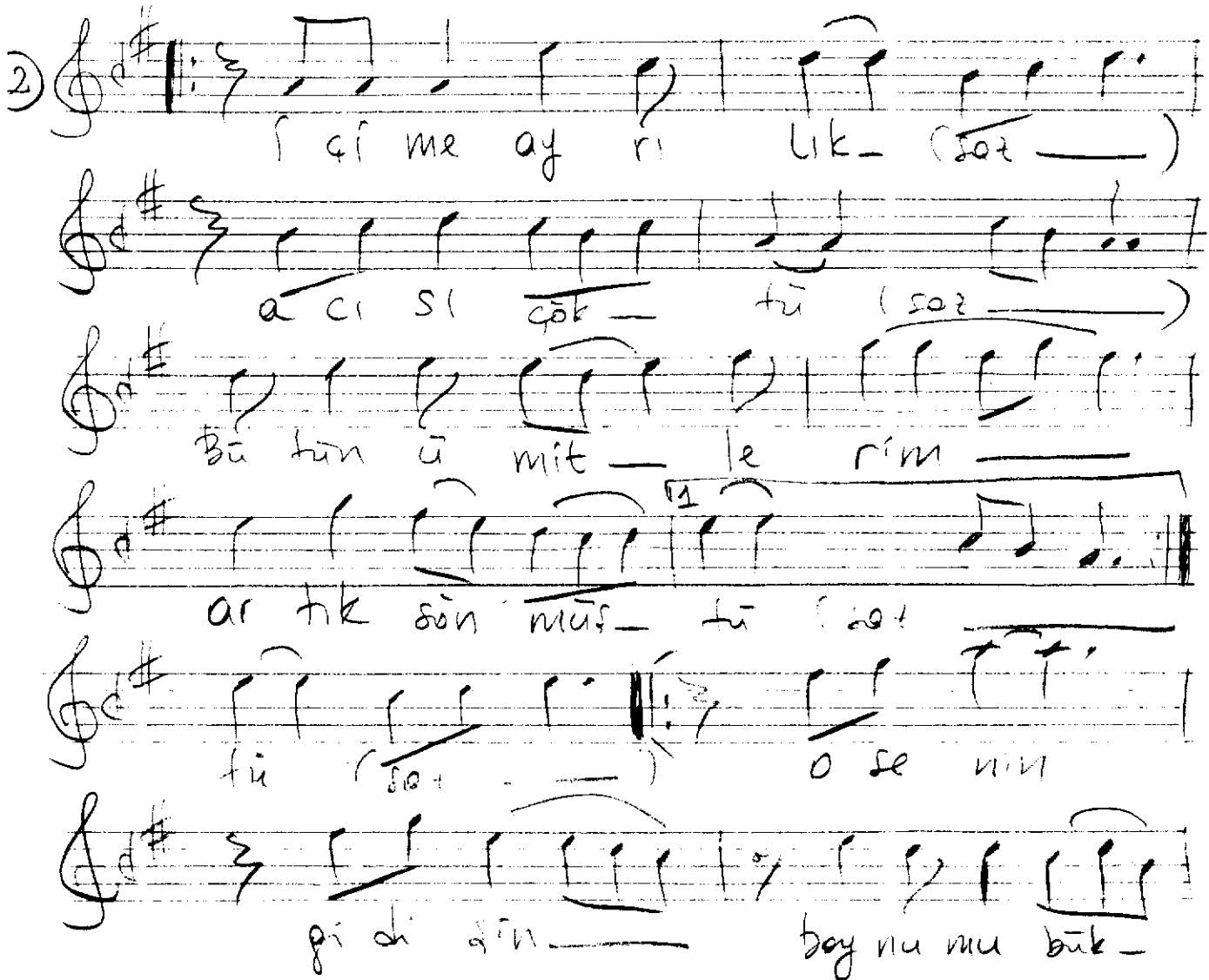
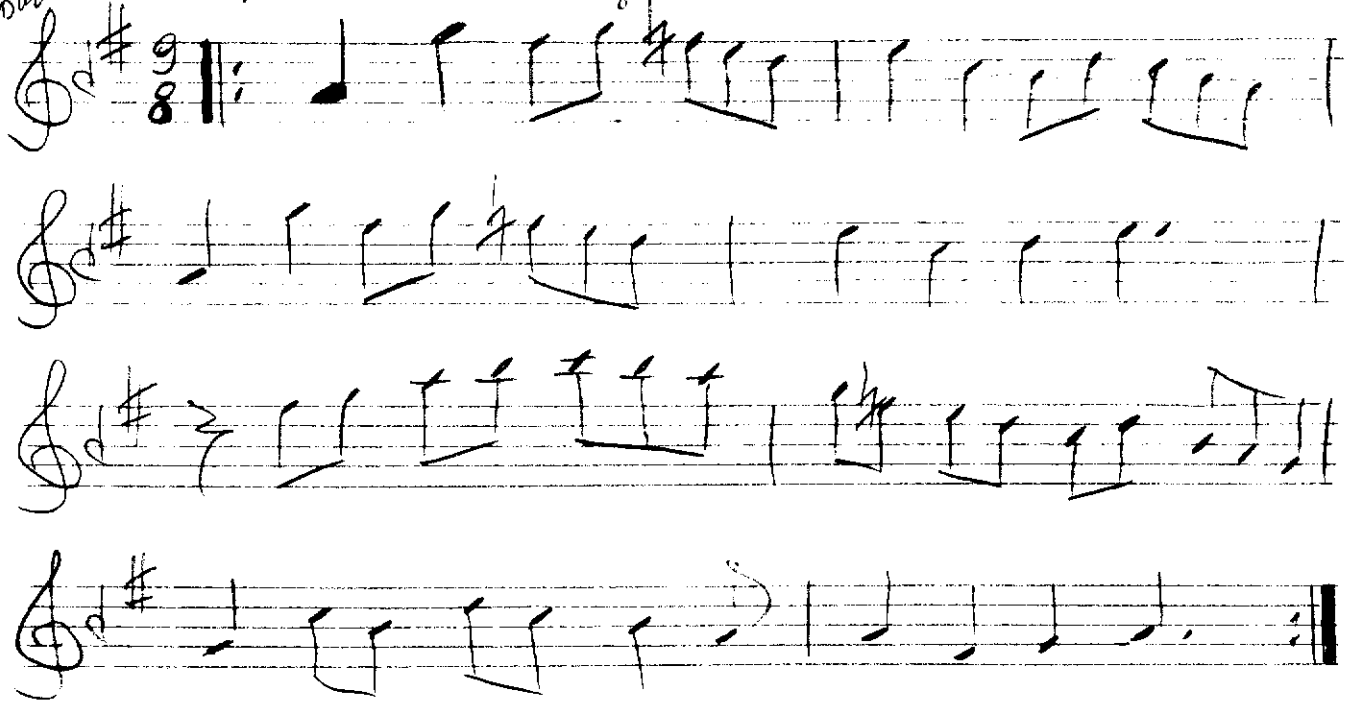
HÜSEYİNİ

MÜZİK: AYDIN TEKİNDÖR

SÖZ: AYLA PEKENİ
HAKKI YALGIN

80/16

Elimi Ellerim Bıraktığında



Handwritten musical score in G major (one sharp) and 2/4 time. The lyrics are in Romanian and appear to be a traditional folk song. The notation includes vocal lines with lyrics and a piano accompaniment line with chords and some melodic fragments.

Lyrics (Romanian):

tă - (să -) Bar ka cō re
miz yōr u nut de miz
tă (să -) tă (să -)
A lu ren ep re tin
ag ta ma y da - (să -)
tă ta miz u du miz
tă ta ma y da (să -)
da (să -) He di oș re se
re - (să -) u nut ma y
da (să -) Bar ka Ga re

Handwritten musical score for "The Rose Tree" in G major, 2/4 time. The score is written on two staves. The melody is on the top staff, and the bass line is on the bottom staff. The lyrics are written below the notes. The piece ends with a double bar line.

Lyrics:
 up you — u u + de mis —
 tin (so + —) tin (so + —)

②

E li mi ele (m - so + -)

hoi (soi) hoi (soi) de (soi)

goc le m - de ya tar -

po lam se mi - hoi (soi)

hin soi - ho ya

Din ya nin ka de ri boy -

le (soi) - na ka ca re

ma ya - ut se mi -

hin (soi) - hin (soi)